

# A SAFE SINGAPORE

**Phase  
1**

**Phase  
2**

**Phase  
3**

**Safe Re-opening**  
Gradual re-opening  
of some activities

**Safe Transition**  
Broader re-opening of  
social and economic activities

**Safe Nation**

## Phase 1 - Safe Re-opening from 2 June 2020



### Safe Workplaces

Some businesses re-open with Safe Management measures.



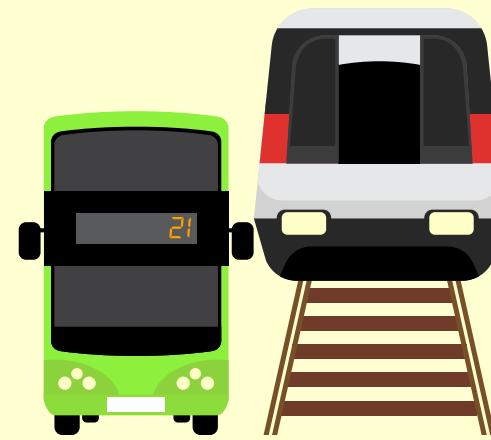
### Safe Homes

Households can receive 2 visitors per day - must be children and/or grandchildren from the same household.



### Safe Schools

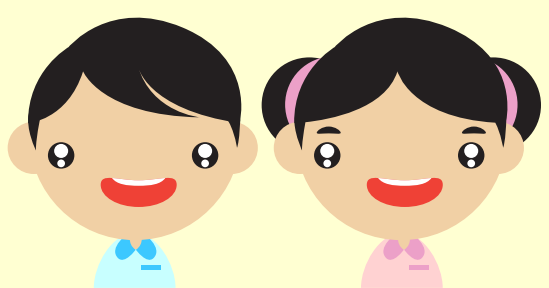
Primary and secondary school graduating cohorts attend school daily. Other students alternate between Home-Based Learning (HBL) and school.



### Safe Commuting

All must wear mask. Avoid talking and maintain good personal hygiene.

## Safe Community



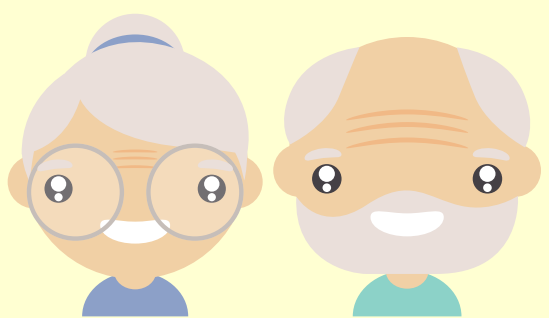
### Care Arrangements for Children

Preschools will gradually re-open; fully by 10 June 2020. Student Care Centres will also resume.



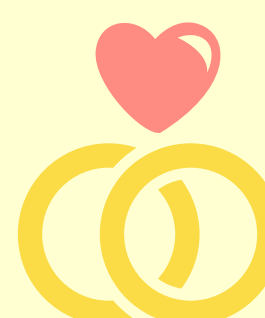
### Places of worship

Re-open for private worship only.



### Support for Seniors

Senior Activity Centres will gradually resume some activities in a safe and controlled manner to help seniors with little or no social support.



### Marriage solemnisations

Can take place in-person, with 10 people in attendance.



**Wear a mask when outside home**  
Check in and out with **SafeEntry** when required



### Do not spread rumours

Get the latest on COVID-19 by signing up for the Gov.sg WhatsApp channel ([www.go.gov.sg/whatsapp](https://www.go.gov.sg/whatsapp)). The service is available in English, Chinese, Malay and Tamil.



# A SAFE SINGAPORE

Phase  
1

Phase  
2

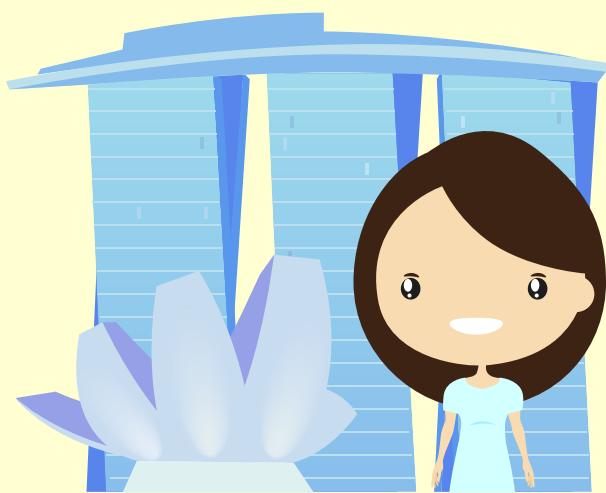
Phase  
3

**Safe Re-opening**  
Gradual re-opening  
of some activities

**Safe Transition**  
Broader re-opening of  
social and economic activities

**Safe Nation**

## Phase 2 - Safe Transition



### Economy

More businesses will re-open, starting with F&B dine-in, retail outlets, gyms and fitness studios, tuition and enrichment centres. All must have safe management measures.



### School

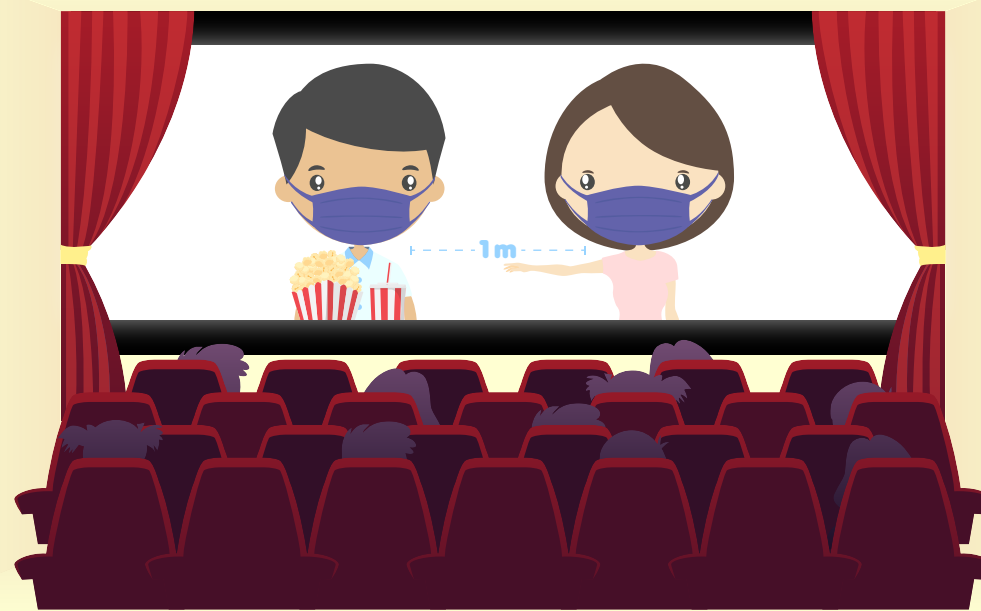
All students will return to school. Institutes of Higher Learning (IHLs) will increase the number of students back on campus at any one time for face-to-face learning.



### Community

Sports, recreation and outdoor facilities will re-open, with safe management practices.

## Phase 3 - Safe Nation



Social, cultural, religious and business gatherings or events would have resumed, with limited crowd sizes to prevent large clusters from arising.



**Wear a mask when outside home**  
Check in and out with **SafeEntry** when required



### Do not spread rumours

Get the latest on COVID-19 by signing up for the Gov.sg WhatsApp channel ([www.go.gov.sg/whatsapp](https://www.go.gov.sg/whatsapp)). The service is available in English, Chinese, Malay and Tamil.

